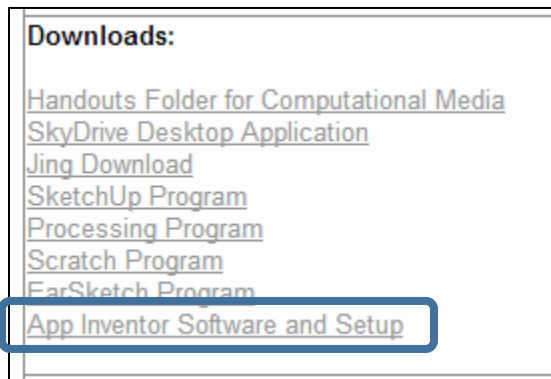
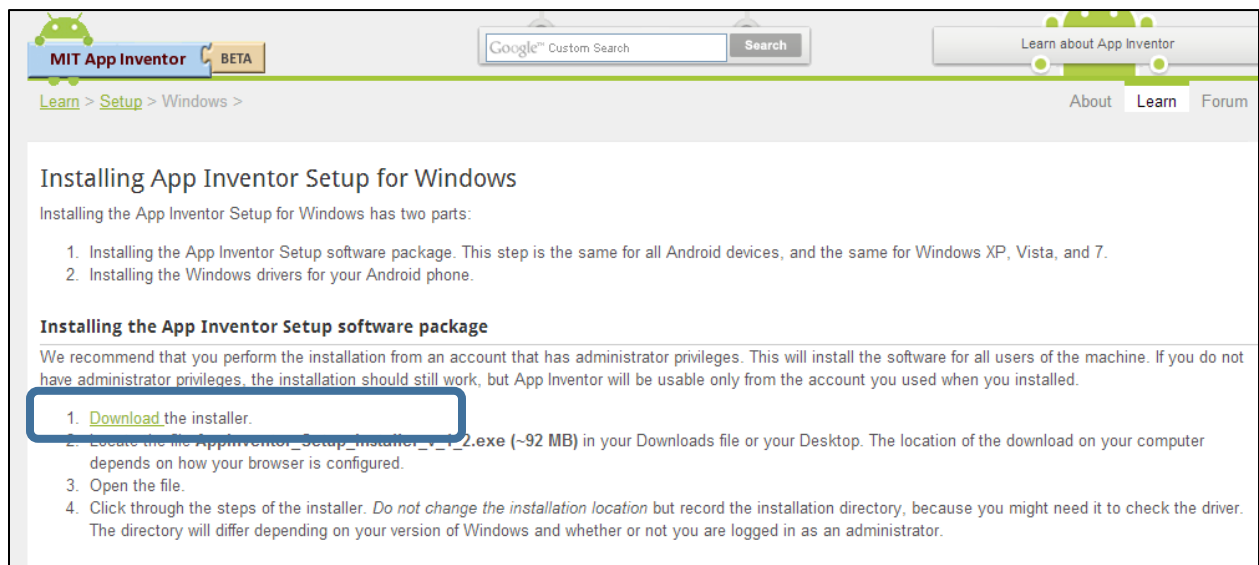


Directions for Installing App Inventor and Updating Driver for Nexus Phone

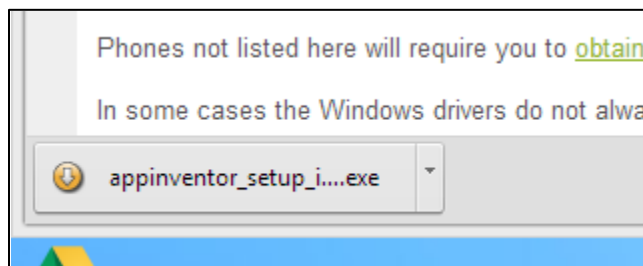
1. Click on the link to install App Inventor on the Computational Media Page



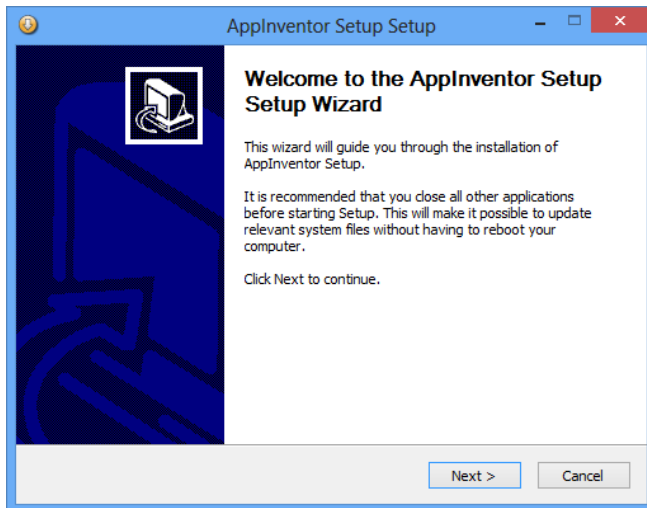
2. Click the link to Download the installer.



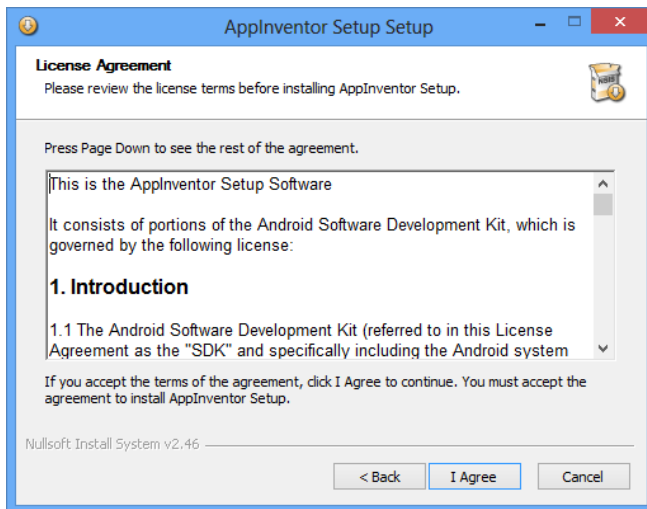
3. Run the installer (Should be located in downloads/appinventor_setup . . .) In Chrome, click the link on the bottom of the page.



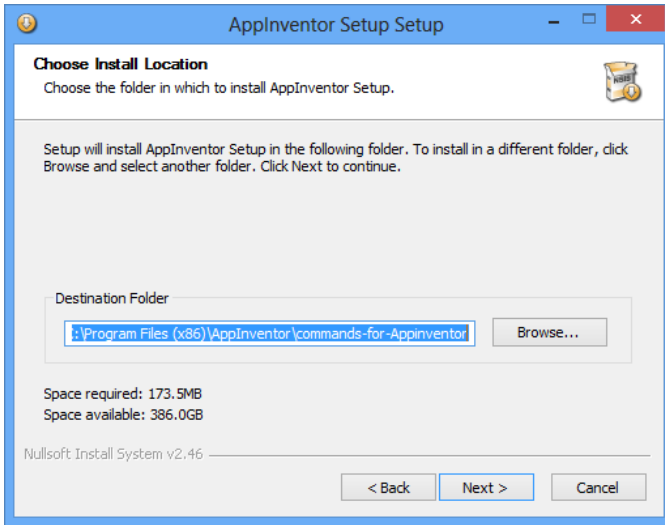
4. Click Next:



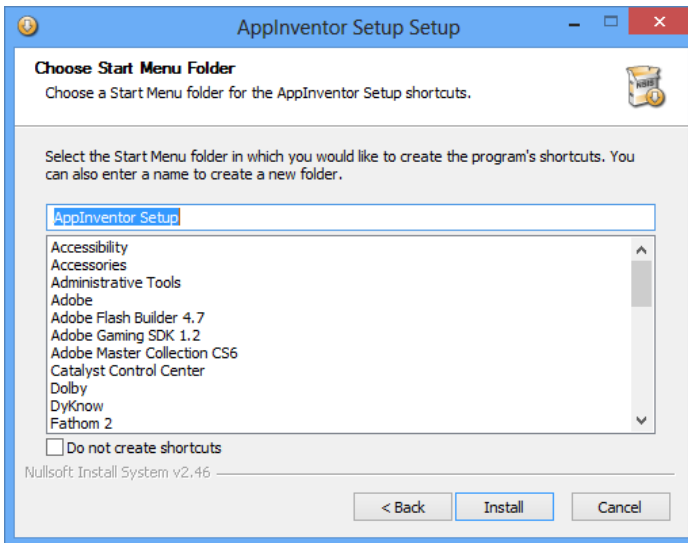
5. Click "I Agree"



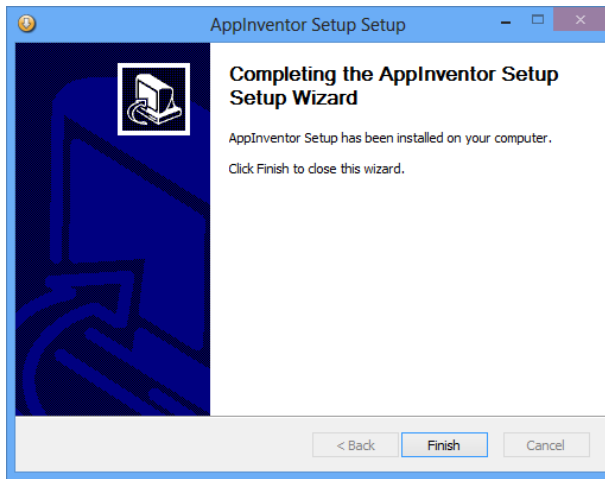
6. Click "Next"



7. Click "Install"

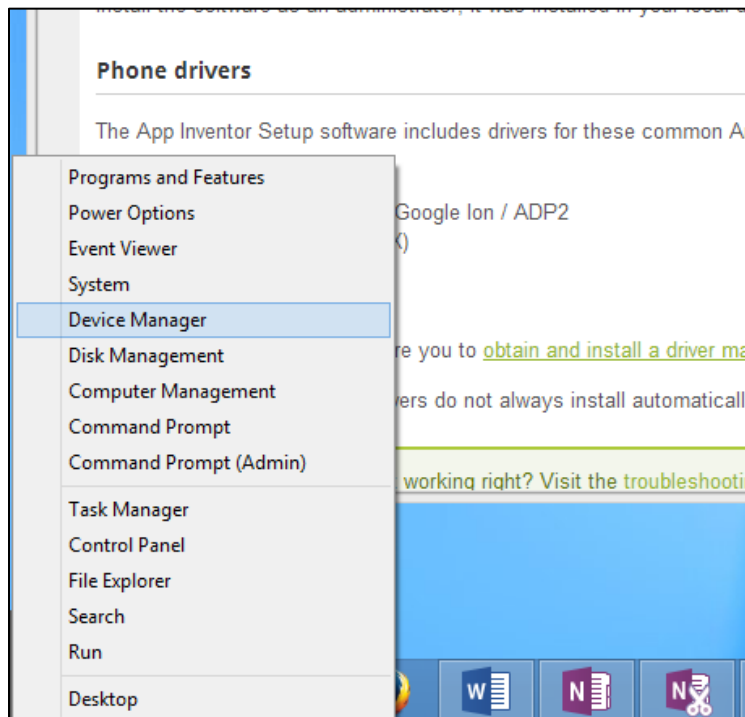


8. Click Finish

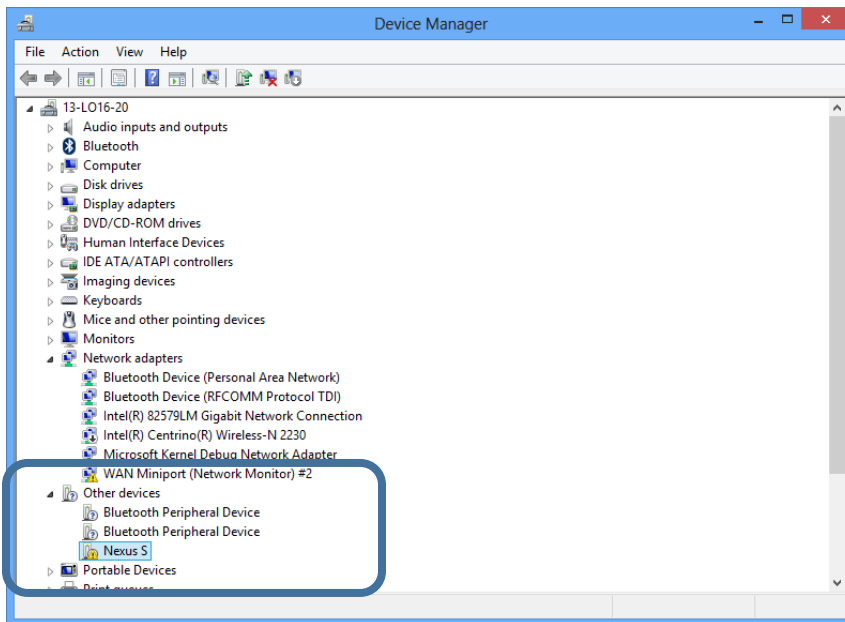


9. The install process is finished. We now need to make sure the driver for the Nexus Phone is working. Plug the phone into the computer via the USB.

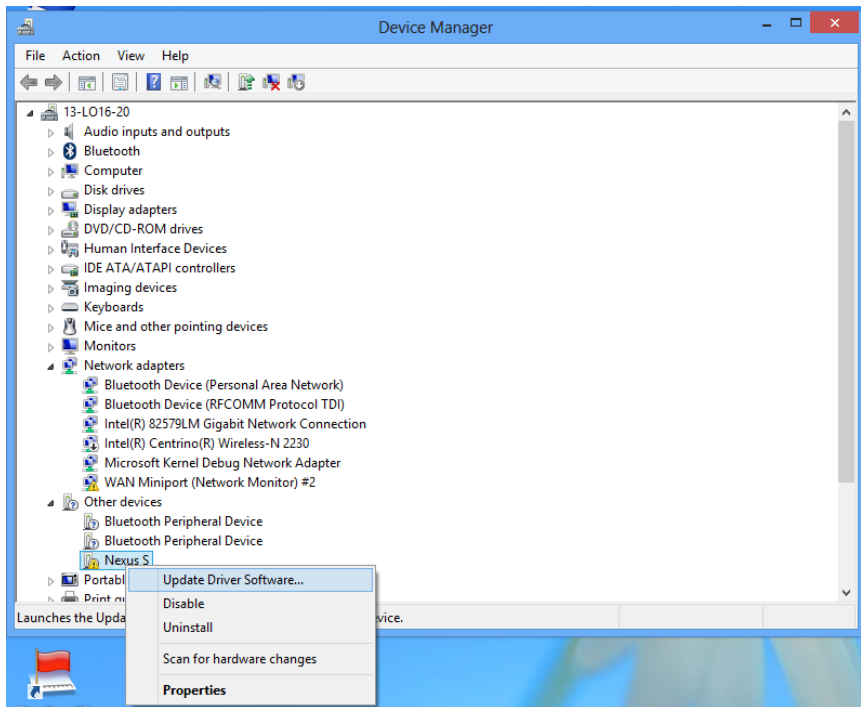
10. Open Device Manager: Right Click in the lower left hand corner of your screen.



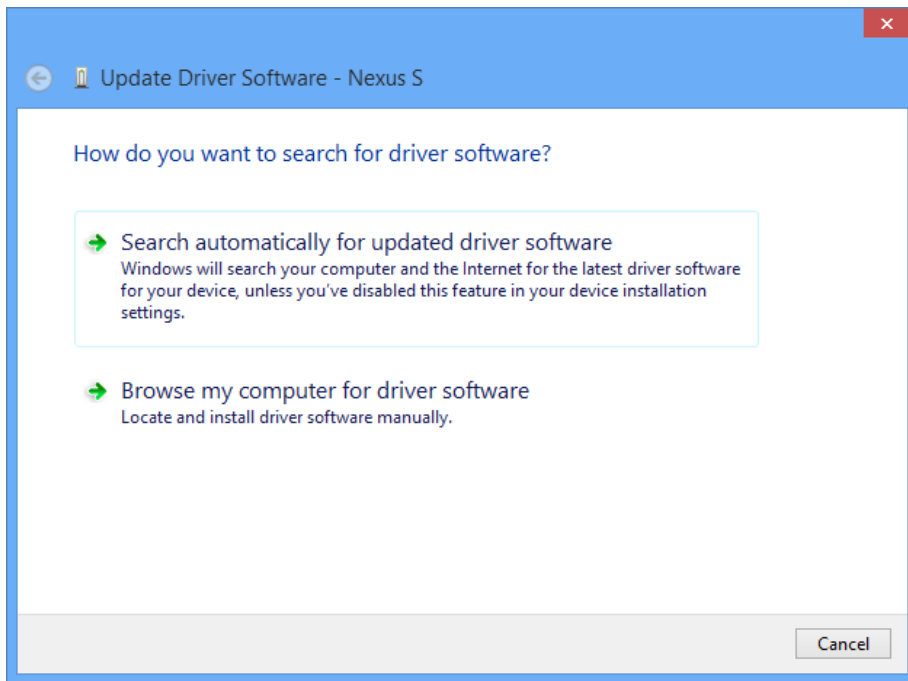
11. On Device Manager, locate the Nexus S icon.



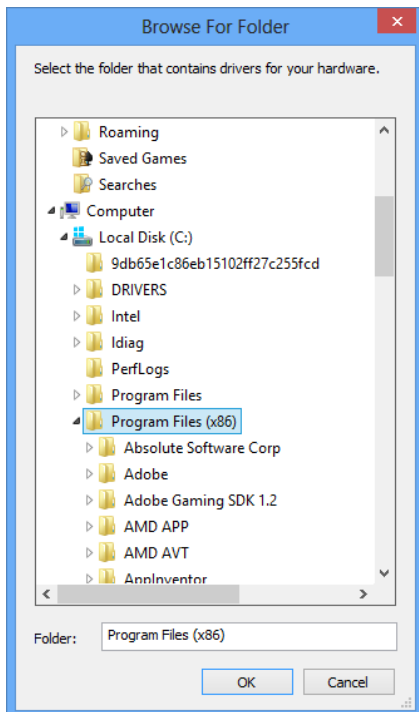
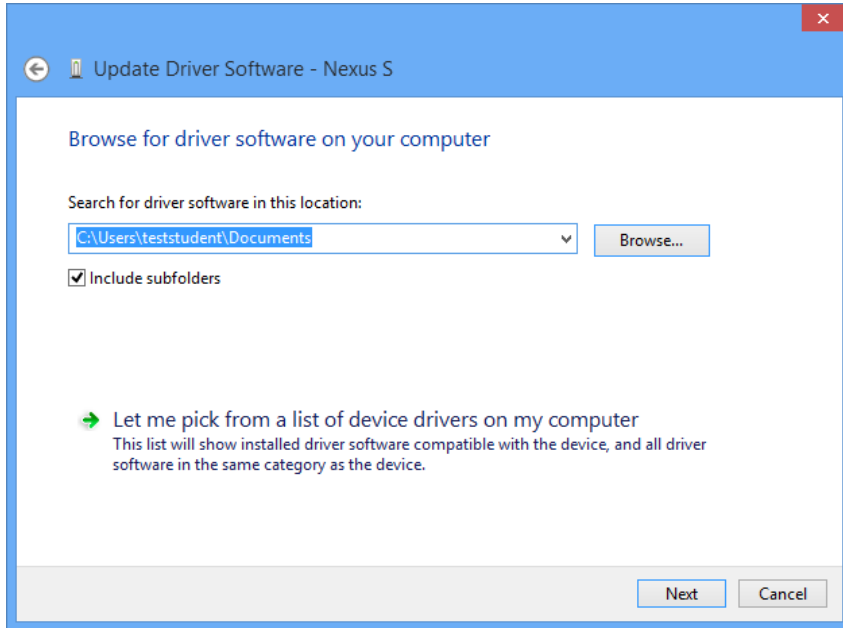
12. Right Click on the Nexus S icon. Select "Update Driver Software"



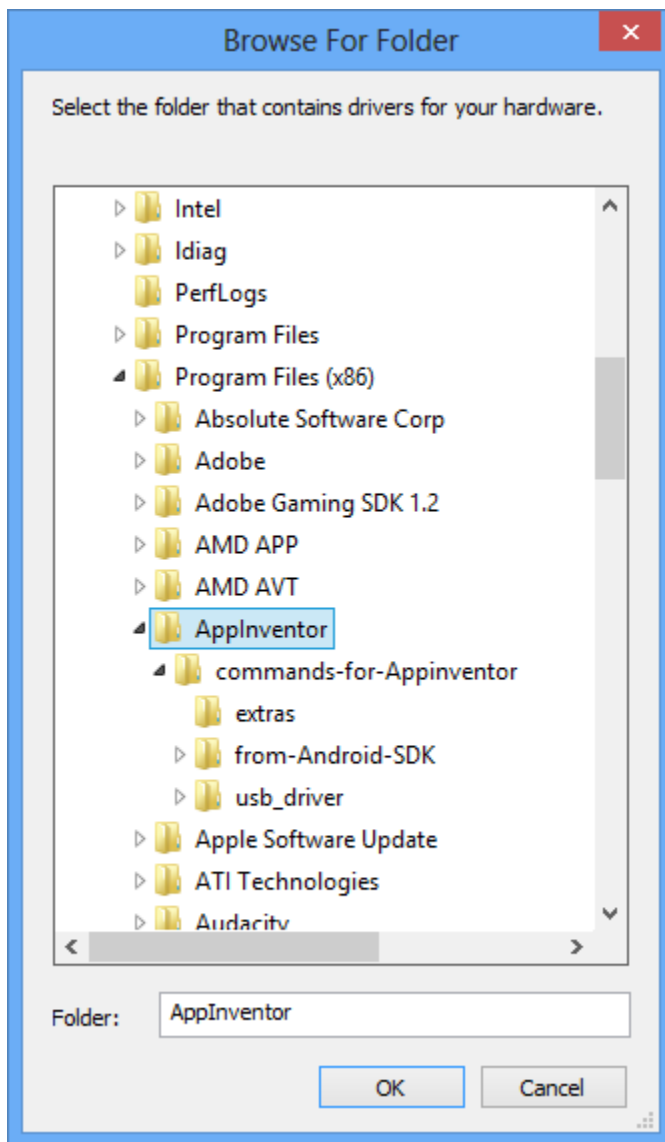
13. Select "Browse My Computer for Driver Software"



14. Click “Browse” and locate the C:/Program Files (x86) Folder

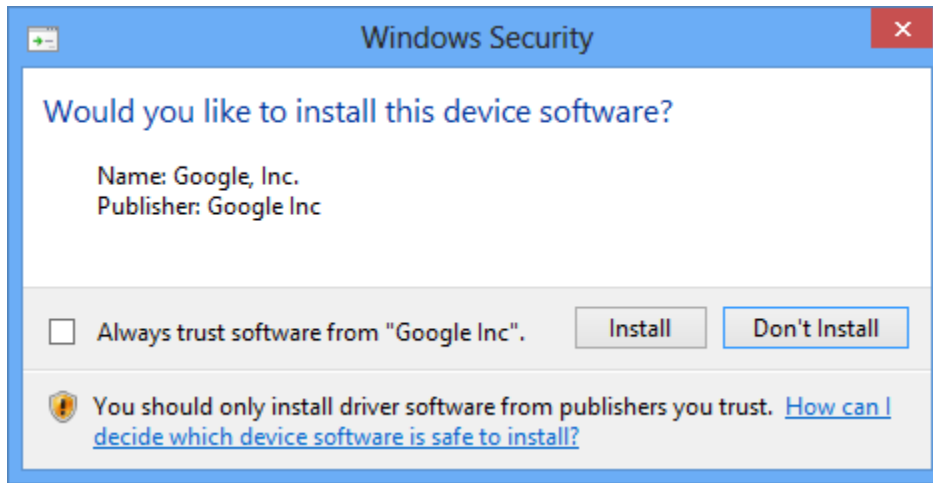


15. Select the AppInventor Folder and Click OK

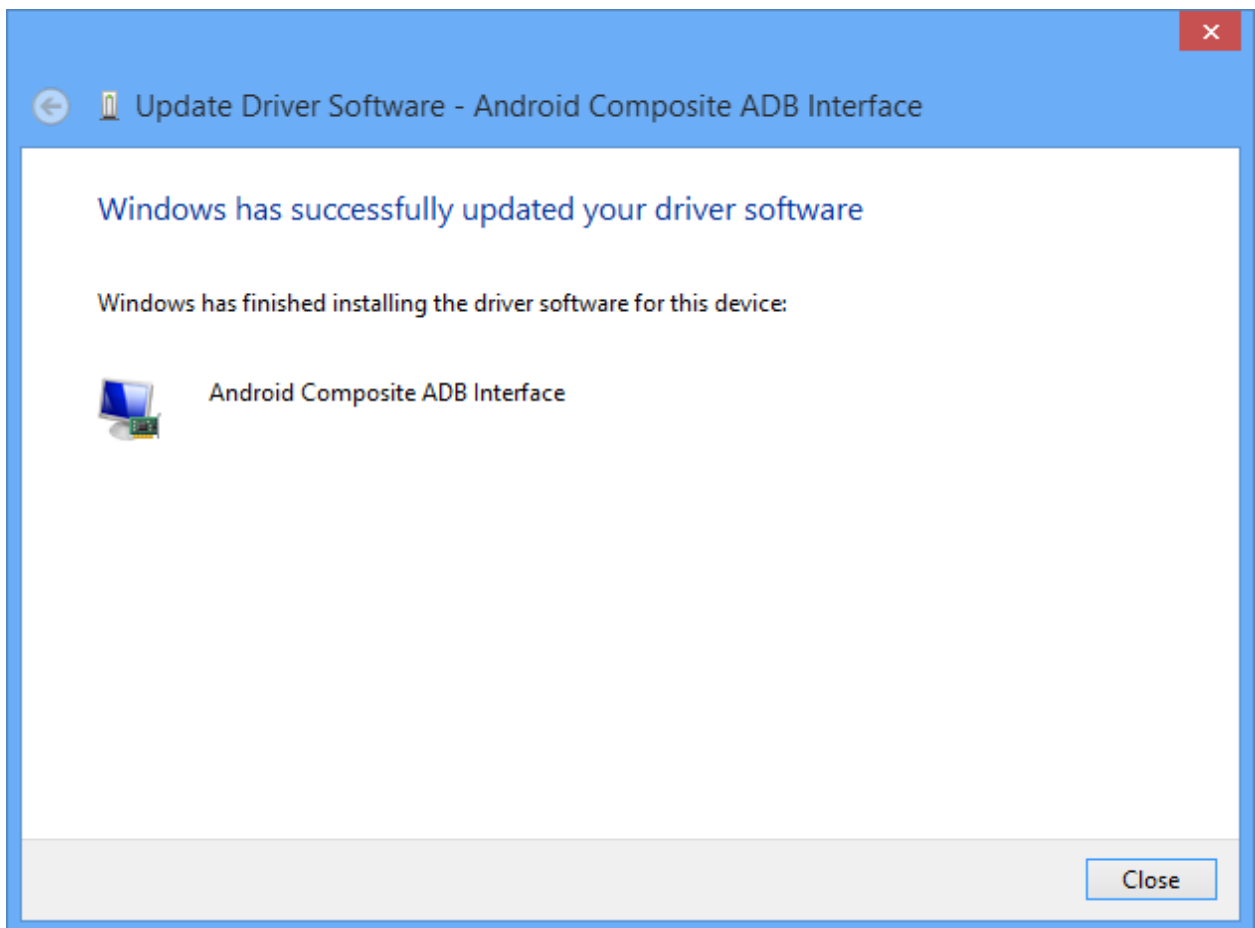


16. Click Next

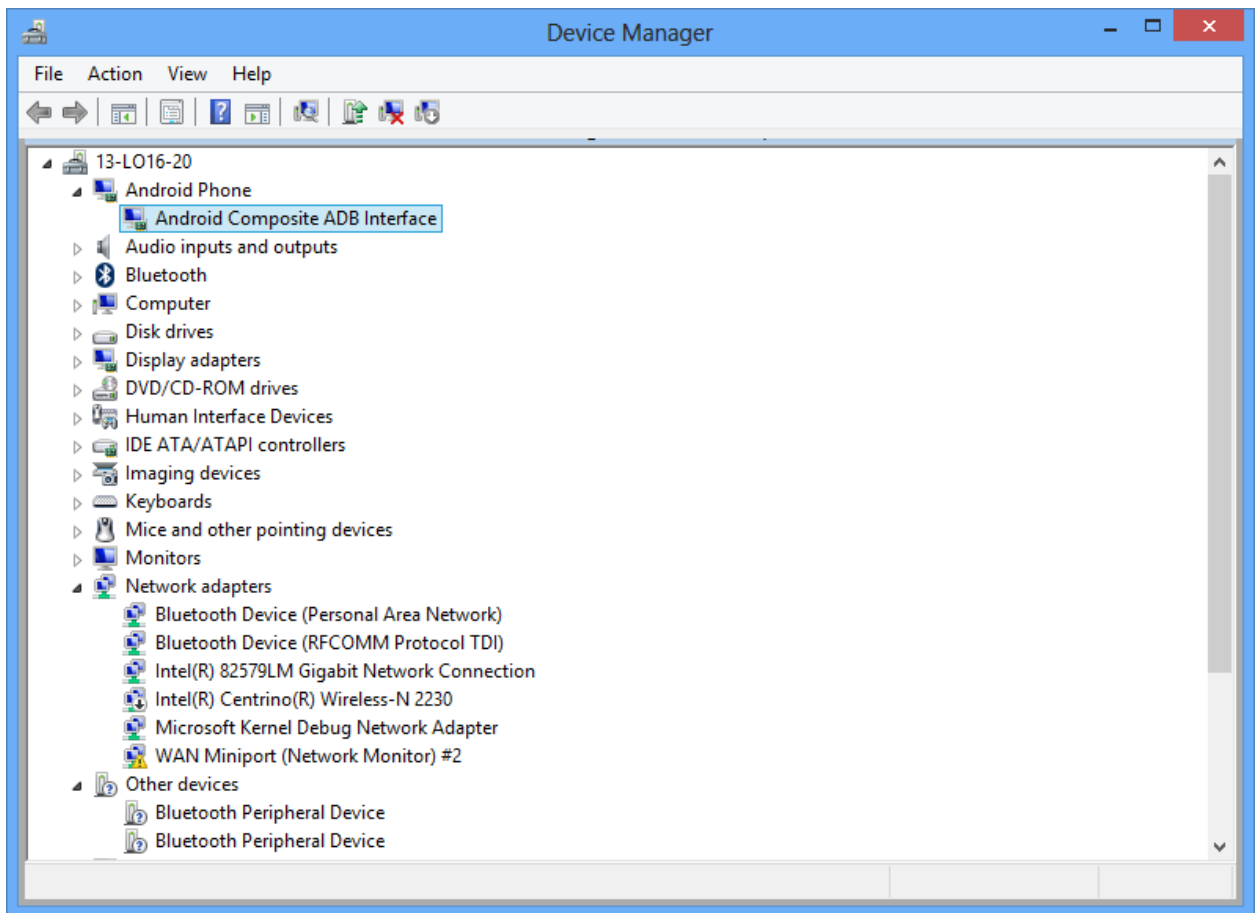
17. A Windows Security dialog will open. Click “Install”



18. If you see the Android Composite window, you are successful. Click “Close”.



19. Close Device Manager.



20. Your Nexus Phone should work with App Inventor. Start the Blocks Editor and Select “Connect to Device” and select the long number

